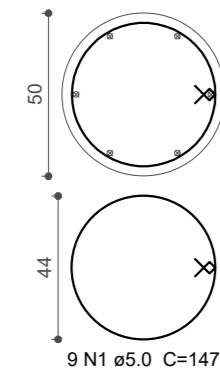
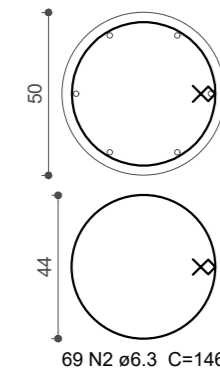


P9

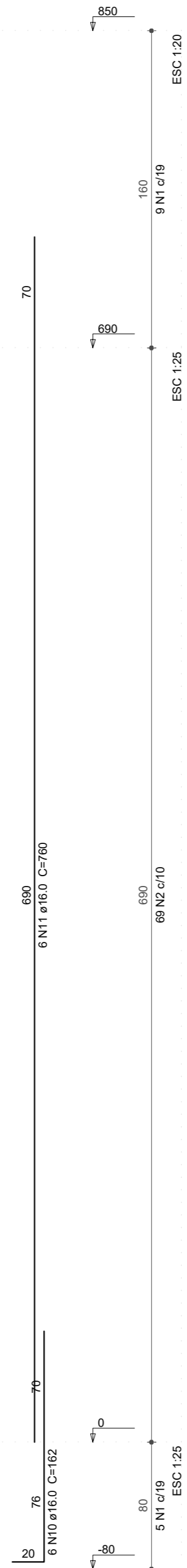
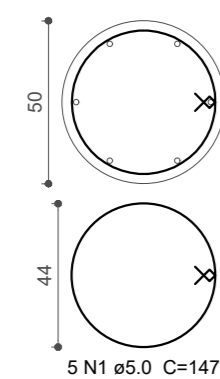
TIRANTE - L3  
ESC 1:20



COBERTURA - L2  
ESC 1:20

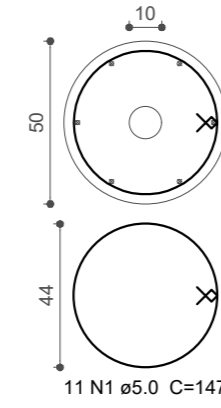


TÉRREO - L1  
ESC 1:20

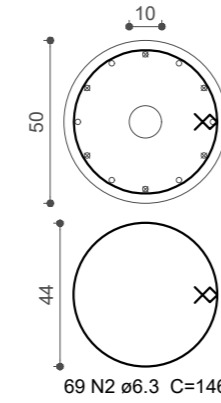


P10

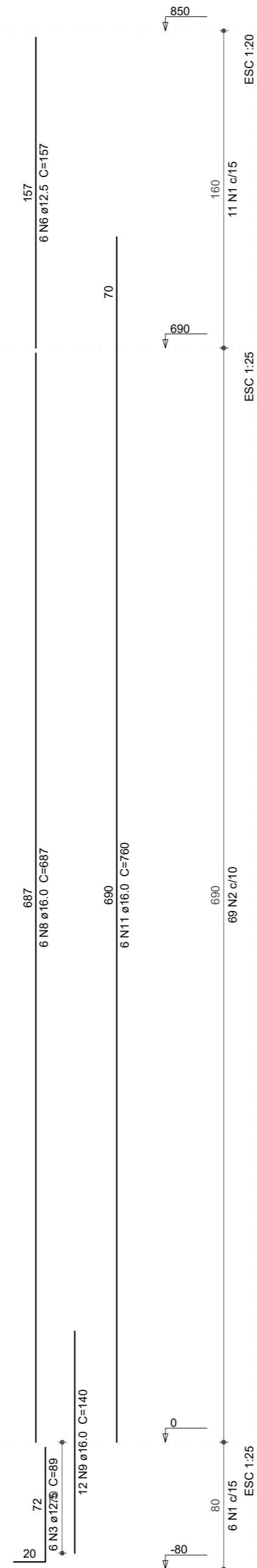
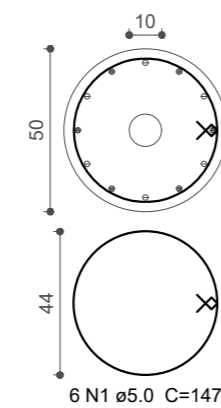
TIRANTE - L3  
ESC 1:20



COBERTURA - L2  
ESC 1:20



TÉRREO - L1  
ESC 1:20



# Prefeitura Municipal de Taquari

Estado do Rio Grande do Sul

Fone: (51)3653-6200 (224) e-mail: planejamento@taquari.rs.com.br

Departamento de Engenharia & Arquitetura

**Obra:** Centro de Comercialização de Produtos Associados ao Turismo

**Descrição:** Projeto Estrutural Pilares e Fundações

**Endereço da obra:** Rua Vereador Praia, S/N

**Responsável projeto Estrutural de Concreto Armado**  
Eng. Sérgio Noschang CREA 152282 **Área:** 358,60m²

**Data:**  
Julho/2019

**Escala:**  
Indicada

**Prancha:**  
08-11