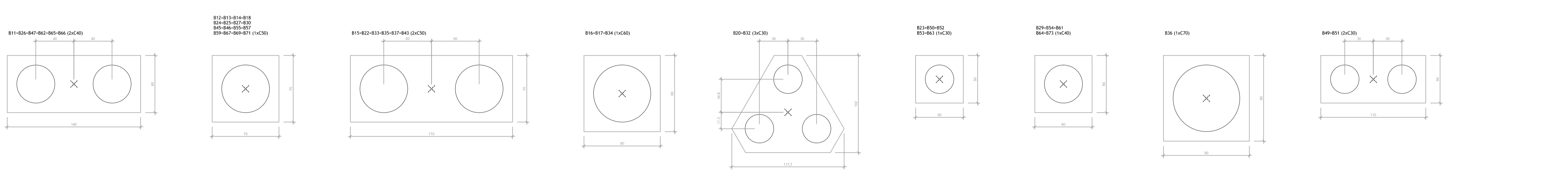


Planta de locação
escala 1:100



Nome	Seção	X (cm)	Y (cm)	Carga máx.		Wx (kgf/m)	My (kgf/m)	Fx (cm)	Fy (cm)	Fundação		Lado I (cm)	Lado II (cm)	Lado III (cm)	Lado IV (cm)	h1 / h2 (cm)	ne	Extaca (cm)	ca (cm)	Base tub. (cm)
				(t)	(t)					(cm)	(cm)									
P11	20x30	1460.00	1975.00	44.4	27.8	0	0	1.8	4.1	140	60	50	2	C40	-85					
P12	20x30	304.93	1980.00	44.4	27.8	0	0	2.8	0.9	70	70	50	75	1	C30	-110				
P13	20x30	4150.00	1975.00	36.2	23.2	0	0	2.6	2.0	70	70	50	75	1	C30	-110				
P14	20x30	10	1875.00	60.0	39.3	0	0	1.6	1.5	70	60	50	75	1	C30	-110				
P15	20x30	700.00	1875.00	86.2	61.9	0	0	1.6	4.8	170	70	50	60	2	C30	-95				
P16	20x30	1390.00	1875.00	92.8	70.7	0	0	1.4	0.9	80	80	50	90	1	C40	-135				
P17	20x30	2080.00	1875.00	78.6	53.4	0	0	1.2	1.7	80	80	50	90	1	C40	-135				
P18	20x30	2770.00	1875.00	70.9	50.8	0	0	1.0	1.3	70	70	50	75	1	C30	-110				
P19	20x30	5300.00	1920.00	12.9	12.3	0	0	7.5	0.9	118	102	50	45	3	C30	-80				
P22	20x40	10	1545.03	40.8	32.7	0	0	0.2	3.0	170	70	50	60	2	C30	-95				
P23	20x40	244.97	1545.03	36.4	25.0	0	0	0.1	0.6	50	50	50	55	1	C30	-80				
P24	20x40	2080.00	1545.03	36.4	25.0	0	0	0.3	2.6	70	70	50	75	1	C30	-110				
P25	20x40	2770.00	1545.03	51.2	35.3	0	0	0.9	2.5	70	70	50	75	1	C30	-110				
P26	20x40	1460.00	1545.03	54.9	40.7	0	0	1.3	3.2	140	60	50	2	C40	-85					
P27	20x40	4149.93	1595.00	43.1	38.0	0	0	1.9	1.7	70	70	50	75	1	C30	-110				
P29	20x30	3620.00	1549.87	28.1	22.9	0	0	0.7	0.1	60	60	50	65	1	C40	-100				
P30	20x30	3920.00	1549.87	39.4	31.1	0	0	0.8	1.5	70	70	50	75	1	C30	-110				
P32	20x30	5300.00	1440.00	13.2	12.6	0	0	6.5	0.9	118	102	50	45	3	C30	-80				
P33	20x30	700.00	1362.13	49.7	26.0	0	0	0.2	4.2	170	70	50	60	2	C30	-95				
P34	20x30	10	1215.00	100.4	72.1	0	0	1.4	2.1	80	80	50	90	1	C40	-135				
P35	20x30	700.00	1215.00	99.7	71.8	0	0	1.5	3.4	170	70	50	60	2	C30	-95				
P36	20x30	1390.00	1215.00	130.7	98.3	0	0	1.3	0.9	90	90	50	100	1	C70	-135				
P37	20x30	2080.00	1225.00	141.4	98.9	0	0	1.0	2.3	170	70	50	2	C30	-85					
P43	20x70	2770.00	1225.00	112.7	77.3	0	0	1.2	2.5	170	70	50	50	2	C30	-85				
P45	20x30	1460.00	1215.00	78.4	56.2	0	0	2.1	1.9	70	70	50	75	1	C30	-110				
P46	20x30	3690.00	1200.00	43.6	32.8	0	0	0.7	0.6	70	70	50	75	1	C30	-110				
P47	20x30	4150.00	1210.00	50.0	42.5	0	0	1.7	2.9	140	60	50	2	C40	-80					
P49	20x30	5300.00	960.00	8.4	7.1	0	0	1.9	2.8	110	50	50	45	2	C30	-80				
P50	20x30	239.99	720.00	6.2	5.6	0	0	2.8	0.5	50	50	50	35	1	C30	-90				
P51	20x30	929.99	720.00	8.4	7.1	0	0	2.1	3.1	110	60	50	45	2	C30	-80				
P52	20x30	1620.10	720.00	13.5	12.9	0	0	2.9	2.2	50	50	50	35	1	C30	-90				
P53	20x30	3310.00	720.00	14.3	13.4	0	0	2.8	2.5	60	60	50	45	1	C40	-100				
P54	20x30	3000.00	720.00	9.5	7.9	0	0	1.3	1.9	60	60	50	45	1	C40	-100				
P55	20x30	3460.00	720.00	42.7	31.9	0	0	1.1	1.6	60	70	50	75	1	C30	-110				
P57	20x30	4150.00	700.00	74.3	57.8	0	0	0.7	1.9	70	70	50	75	1	C30	-110				
P59	20x30	4840.00	700.00	64.0	48.1	0	0	0.4	1.6	70	70	50	75	1	C30	-110				
P61	20x30	5300.00	700.00	32.8	20.5	0	0	1.8	2.2	60	60	50	60	1	C40	-100				
P62	20x40	1460.00	350.00	30.4	22.9	0	0	0.3	3.2	140	60	50	2	C40	-85					
P63	20x30	1460.00	350.00	4.5	2.4	0	0	0.7	1.1	60	60	50	2	C30	-80					
P64	20x40	5300.00	360.00	29.3	23.2	0	0	0.1	2.6	60	60	50	65	1	C40	-100				
P65	20x30	1620.10	230.00	32.5	26.9	0	0	1.3	1.7	60	60	50	2	C40	-80					
P66	20x30	2305.10	230.00	32.7	29.9	0	0	1.5	0.8	140	60	50	2	C40	-85					
P67	20x30	2460.00	25.00	30.0	18.8	0	0	1.5	2.1	70	70	50	75	1	C30	-110				
P69	20x30	4150.00	25.00	40.4	24.2	0	0	1.4	1.3	70	70	50	75	1	C30	-110				
P71	20x30	4840.00	25.00	59.8	43.3	0	0	0.8	1.3	70	70	50	75	1	C30	-110				
P73	20x30	5300.00	25.00	30.2	18.4	0	0	1.8	1.9	60	60	50	65	1	C40	-100				

Nome	Extaca (cm)	Quantidade
C30	30.00	15
C40	40.00	17
C50	50.00	28
C60	60.00	1
C70	70.00	1

REVISÃO	DESCRIÇÃO	DATA	VISTO

OBRA/SERVIÇO: ESCOLA ADROALDO MESQUITA DA COSTA

ENDEREÇO: AV. JOSÉ PORFÍRIO DA COSTA, BAIRRO COQUEIROS

TÍTULO: PROJETO ESTRUTURAL - PLANTA DE FUNDAÇÕES

	PROPRIETÁRIO: Município de Taquari	PRANCHA Nº: EST 01
	Emanuel Hassen de Jesus - Prefeito Municipal	
PROJETO ESTRUTURAL		SÉRGIO V. NOSCHANG - ENGENHEIRO CIVIL - CREA/RS 152282
1694,15 m² ÁREA		
S/ESCALA	Escala	Outubro/2019 DATA
0	REVISÃO	